



**SILICON VALLEY-SAUDI  
DEEPTECH SHOWCASE**

***RIYADH, SAUDI ARABIA  
MAY 21, 2025***

**JW Marriott Riyadh  
Masmak (4F)  
Conference Room**



## **Radiate Ventures presents: The Silicon Valley-Saudi Deeptech Showcase**

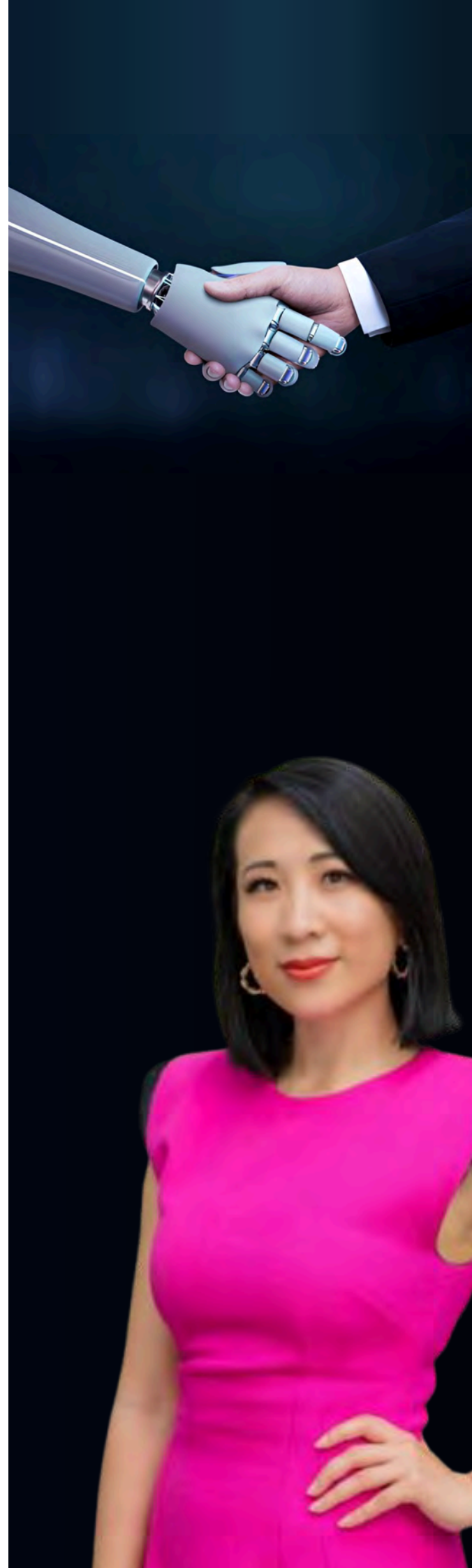
This event brings together global deep-tech innovators and regional partners to explore the future of industrial systems—energy, water, housing, infrastructure, and computing. The featured founders are developing technologies aligned with Saudi Arabia's Vision 2030, advancing self-sufficiency and industrial resilience. At Radiate Ventures, we invest in step-change technologies that solve high-impact challenges on the frontier of what is technologically possible.

As we navigate an increasingly dynamic future, we aim to deepen collaboration between our US and Asian portfolio companies and our partners in Saudi Arabia—particularly in aerospace, defense, energy, semiconductors, and artificial intelligence. These partnerships are essential to scaling breakthrough technologies in the Kingdom. Radiate has been active in the region for over six years, and we appreciate your continued support.

Sincerely,

*Cathryn Chen*

General Partner, Radiate Ventures



# Agenda

## Silicon Valley-Saudi Deeptech Showcase

11:00-11:10 AM	<b>Reception</b> Welcome & Opening Remarks by Cathryn Chen, General Partner, Radiate Ventures
11:15 AM -11:55 PM	<b>Founder Spotlights I – Technical Deep Dives on Modular Housing Construction and Clean Energy</b> Speakers: Markus Fuhrmann - Gropyus   Brad Hartwig - Arbor Energy
12:00-12:40 PM	<b>Panel   Leveraging AI in Mining Technology</b> Exploring AI and robotics in making mining more efficient Speakers: Karl Boustany - CAUR Technologies   Roman Teslyuk - Earth AI
12:45-1:25 PM	<b>Panel   Personalized Health and Performance: The Role of AI and Wearables</b> How AI-powered wearables and platforms are reshaping cognitive performance and preventive health. Speakers: Adam Molnar - Neurable   David Cipoletta - Pison   Mac Marchione - Superpower
1:30 PM-2:10 PM	<b>Panel   Water Infrastructure Without the Grid</b> Decentralised, autonomous systems for arid and coastal regions. Speakers: Brian Sheng - Aquaria   Augustus Doricko - Rainmaker
2:15-2:55 PM	<b>Networking Lunch &amp; LP – Founder 1:1s</b>
3:00-3:15 PM	<b>Ana Carmen Neboisa of the US-Saudi Business Council</b>
3:15-3:55 PM	<b>Founder Spotlights II – Technical Deep Dives on Chemicals &amp; Industrial AI</b> Speakers: Gaurab Chakrabarti - Solugen   Greg Fallon - Geminus
4:00-4:40 PM	<b>Panel   Operational Intelligence in the Enterprise</b> How AI is transforming decision-making in sectors like manufacturing, logistics, and finance Speakers: Anant Bhardwaj - Instabase   Rish Gupta - Spot AI
4:45-5:25 PM	<b>Panel   Silicon as Strategy: Unlocking Frontier AI Through Semiconductor Innovation</b> How advances in chip design and fabrication are enabling faster, more scalable AI. Speakers: Chris Dillon - Groq   Gem Shoute - Zinite
5:30-5:45 PM	<b>Localising Innovation: The Aramco-Hyperview Hydrogen JV</b>
5:45-6pm PM	<b>Closing Remarks by Cathryn Chen, General Partner of Radiate Ventures</b>

The background is a solid reddish-orange color. On the left side, there are several overlapping, wavy, light-colored lines that create a sense of depth and movement. In the upper left quadrant, there is a small, semi-transparent grid pattern that overlaps with the wavy lines. The overall aesthetic is modern and abstract.

# **Featured Companies & Speakers**



Arbor Energy is building modular, carbon-negative power stations that turn organic waste into clean electricity while permanently removing atmospheric CO<sub>2</sub>. Founded by a former SpaceX engineer and headquartered in California, Arbor combines aerospace-grade oxycombustion, supercritical turbomachinery, and carbon sequestration to deliver scalable baseload power with negative emissions.

Arbor's systems are designed for rapid deployment and local integration, helping decarbonise grids while preventing wildfire emissions and landfill waste. Its initial 5 MW facility, supported by a carbon removal agreement with Microsoft, will scale to 100 MW and nearly 2 million tonnes of annual CO<sub>2</sub> removal by 2030. Arbor is backed by Gigascale Capital, Voyager Ventures, Lowercarbon Capital, and Cantos Ventures.



## OVERVIEW

SECTOR: Health

GEOGRAPHY: USA



**Brad Hartwig**  
CEO

Brad Hartwig is the Founder and CEO of Arbor. At SpaceX, he led development and integration of the Draco engines for Crew Dragon and supported NASA crew systems. He later tested electric aircraft at Kitty Hawk. Trained in aerospace engineering at USC, he left graduate studies at UC Berkeley to run Arbor.



Founded in 2021, Aquaria is a California-based water technology company that manufactures atmospheric water generators (AWGs) for residential and commercial use. Its flagship Hydropack system produces up to 264 gallons of clean water per day by harvesting moisture from the air using patented ambient heat exchange technology.

The water exceeds EPA and WHO standards and is suitable for drinking, showering, and cooking. The system is solar-compatible, modular, and equipped with 24/7 monitoring, offering year-round water security with zero reliance on wells or municipal supply. With lower energy consumption and financing options, Aquaria aims to make independent water access scalable and affordable. Its systems are already deployed across multiple U.S. states, with performance validated in varied climate conditions.



## OVERVIEW

SECTOR: Sustainability

GEOGRAPHY: USA



**Brian Sheng and Eric Sheng**  
Founder & CEO

Brian and Eric co-founded Aquaria to develop solar-powered systems that extract clean water from air at community scale. With backgrounds in venture building, robotics, and energy research, they are focused on creating sustainable, off-grid water infrastructure for a more resilient future.



CAUR Technologies is advancing mineral exploration through ambient noise tomography (ANT), IoT-enabled sensors, and AI-powered subsurface imaging. Its platform enables fast, cost-effective, and environmentally low-impact mapping of deep critical mineral deposits across large areas—without the need for explosives, generators, or invasive site prep.

Using passive seismic signals and proprietary machine learning models, CAUR generates high-resolution 3D geological models from sensor networks deployed in the field. The system is adaptable for mineral targeting, geotechnical risk detection, and infrastructure monitoring, including tailings facilities. With a SaaS-based model and growing global demand, CAUR offers mining companies a scalable, sustainable alternative to conventional geophysics—delivering greater speed, precision, and operational simplicity.



## OVERVIEW

SECTOR: Mining

GEOGRAPHY: Americas and GCC



Karl Boustany  
Founding Partner

Karl Boustany is a serial entrepreneur and investor with a track record in scaling companies and executing strategic exits. He combines global perspective with commercial and technical expertise, and previously led business development at TC Transcontinental Packaging.

# EARTH AI

Founded in 2017, Earth AI is a Sydney- and San Mateo-based startup that uses artificial intelligence and proprietary drilling systems to discover critical mineral deposits for the energy transition. Its Mineral Targeting Platform processes satellite, geophysical, and geochemical data to locate new resources in unexplored regions, increasing discovery rates from 0.5% to 66%.

Earth AI operates an end-to-end model: it identifies targets, acquires or partners on mineral rights, and drills with its modular rigs to produce validated samples. The company has made several discoveries, including gold, palladium, and molybdenum, and currently has over 50 sites in its pipeline.

Its approach reduces costs, timelines, and environmental impact compared to conventional exploration. Earth AI has raised over \$38 million, including a \$20 million Series B led by Tamarack Global and Cantos Ventures, to scale operations across Australia and beyond.



## OVERVIEW

SECTOR: Mining

GEOGRAPHY: Australia



**Roman Teslyuk**  
Founder & CEO

Roman Teslyuk is the founder of Earth AI, a predictive exploration company for critical minerals. A geoscientist with 13 years of global field and research experience, he is a Y Combinator alum and was Australia's first recipient of an Entrepreneur visa.



Founded by Professor Karthik Duraisamy, Geminus.AI is a U.S.-based technology company that develops AI-enhanced digital twins for real-time optimisation of energy assets. Its platform combines physics-based modelling with machine learning to simulate complex systems such as oil reservoirs, surface networks, and artificial lift equipment.

Traditional physics models often struggle with non-linear behaviour and require intensive computation, while pure data-driven models can lack reliability due to sparse or noisy input. Geminus bridges this gap by integrating physical laws into AI models, improving accuracy, speed, and robustness in environments where data is limited or conditions vary. The result is a scalable, real-time system that enables energy operators to simulate scenarios, optimise production, and anticipate operational issues. Designed for seamless integration into existing workflows, Geminus delivers actionable insights for decision-making across upstream oil and gas operations.



## OVERVIEW

SECTOR: AI

GEOGRAPHY: USA



**Greg Fallon**  
CEO

Greg Fallon is a technology executive with leadership experience at Fluent, ANSYS, and Autodesk. He has led product, strategy, and marketing efforts across the U.S. and Europe, driving growth in engineering and design software markets.



Groq is an AI infrastructure company developing Language Processing Units (LPUs), a new class of chips purpose-built for ultra-fast, low-latency inference on large language models and generative AI workloads. Founded by former Google engineers, Groq's deterministic, compiler-driven architecture eliminates bottlenecks found in traditional GPU-based systems, enabling significantly higher throughput and responsiveness for real-time applications.

The company's LPU Inference Engine powers both GroqCloud—a developer-accessible API—and full-stack systems for enterprise deployment. Groq's vertically integrated approach spans hardware, compilers, and cloud services, allowing it to deliver scalable, cost-efficient AI performance with reduced reliance on scarce components like high-bandwidth memory.



## OVERVIEW

SECTOR: Semiconductors

GEOGRAPHY: USA



**Chris Dillon**  
Field CTO

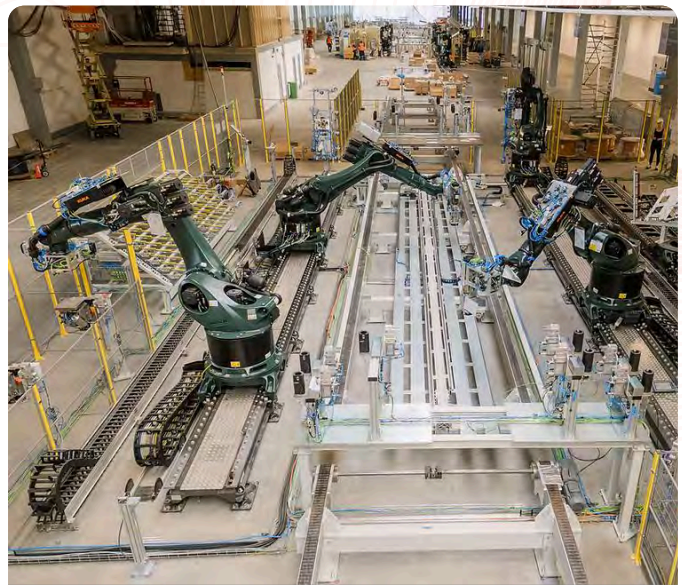
As Field CTO at Groq, Chris leads AI adoption and customer transformation. He brings a proven track record of leveraging data and innovation to drive business growth, with prior roles as Chief Data Officer at Zendesk, GEICO, and American Eagle.



**GROPYUS**

Founded in 2019, GROPYUS is a Vienna and Berlin-based construction tech company that produces turnkey, timber-hybrid apartment buildings with integrated smart management systems. Its vertically integrated model includes digital design, automated offsite manufacturing, and fast on-site assembly.

Over 80% of each building is prefabricated at its AI-enabled smart factory, reducing construction time by up to 50%. GROPYUS's Building Operating System (BOS) supports digital building control, energy management, and value-added services for residents, reducing operating costs by up to 15%. The company delivers ESG-compliant housing solutions designed for longevity, affordability, and sustainability. With a production capacity of 3,500 units per year, GROPYUS aims to scale high-quality housing across Europe.



## **OVERVIEW**

**SECTOR:** Construction

**GEOGRAPHY:** Austria



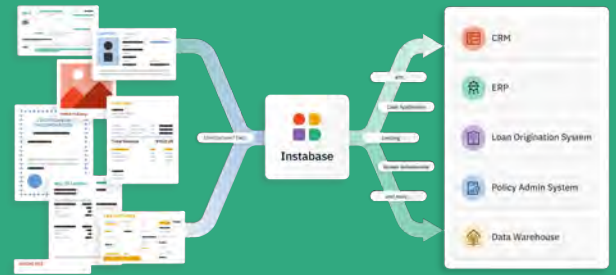
**Markus Fuhrmann**  
Founder & CEO

Markus Fuhrmann founded GROPYUS to transform housing through sustainable, technology-enabled construction. A serial entrepreneur, he previously co-founded Delivery Hero and has supported numerous startups as an investor and advisor.

# INSTABASE

Founded in San Francisco, Instabase is an enterprise AI company that provides a platform for building and deploying applications that process unstructured data across documents, emails, and PDFs. Its core offering, AI Hub, enables organisations to automate complex workflows using large language models and low-code tools.

AI Hub includes three main components: **Converse**, which lets users extract and analyse information from documents using natural language prompts; **Build**, a no-code interface for developing applications that transform unstructured content into structured outputs; and **Search**, a federated tool that connects to over 100 data sources for secure, in-place querying. Instabase also enables users to create chatbots powered by internal content, helping with tasks such as onboarding, customer service, and compliance. Its platform is designed with enterprise security, privacy, and extensibility in mind, and is used across sectors including financial services, insurance, and government.



## OVERVIEW

SECTOR: AI

GEOGRAPHY: USA



**Anant Bhardwaj**  
Founder & CEO

Anant Bhardwaj is the founder and CEO of Instabase, a platform for building AI-powered enterprise applications. He was previously a PhD student at MIT's Computer Science and Artificial Intelligence Laboratory (CSAIL).



Founded as a University of Michigan spinout, Neurable is advancing brain-computer interface (BCI) technology by embedding EEG sensors into everyday devices. Its AI-powered platform captures and interprets brain activity non-invasively, enabling users to monitor cognitive states, maintain focus, and interact with technology using brain signals and simple gestures.

Neurable's first consumer product, the MW75 Neuro—developed with audio brand Master & Dynamic—is the first BCI-enabled headphone, offering productivity tools such as focus tracking and gesture-based text responses. Designed for comfort and seamless integration, the system eliminates distractions and empowers users to stay in flow. In parallel, Neurable has secured \$5M in U.S. Department of Defense contracts and partnered with the Air Force Research Lab to enhance soldier performance using its platform. Backed by \$13M in funding, Neurable is building a BCI ecosystem that merges AI and neuroscience to enable intuitive, real-time interaction with technology.



## OVERVIEW

SECTOR: Neurotechnology

GEOGRAPHY: USA



**Adam Molnar**

**Co-Founder & Head of Business and Partnerships**

Adam Molnar leads go-to-market strategy and commercial partnerships. A Forbes 30 Under 30 honouree, he is active in the global neurotech ecosystem through roles with NeurotechX, Harvard's DCI Network, and the Institute of Neuroethics.



**PISON**®

Pison is pioneering neural interface technology through its proprietary Electroneurography (ENG) AI platform, enabling non-invasive, continuous monitoring of motor cortex signals at the wrist. Its wearables translate passive and active neural signals into actionable insights related to cognition, fatigue, stress, and performance.

Founded in 2016 and based in Boston, Pison has raised \$39M from investors including Samsung Ventures, Bose, and IQT.

Its core technology powers applications across military, workforce safety, elite sports, and cognitive health, delivering accurate reaction-time assessments via its Mental Chronometer feature. Pison is working with leading OEMs to integrate its neural sensors into mainstream smartwatches, backed by partnerships with STMicroelectronics and Qualcomm. With its technology embedded in devices for aviation, trucking, and athletics, Pison is redefining the role of wearables—unlocking personalised neurophysiological monitoring and AI-driven mental performance tools at population scale.



## **OVERVIEW**

**SECTOR:** Neurotechnology

**GEOGRAPHY:** USA



**David Cipoletta**  
Co-Founder & CTO

David Cipoletta is the CTO and co-founder of Pison, with prior experience as a robotics engineer at Charles River Analytics. He holds multiple degrees in engineering and computer science from the University of Rhode Island and leads Pison's development of wearable neural interface technology.



Founded in 2022, Rainmaker is a California-based climate tech company that creates drone-based systems to enhance precipitation through cloud seeding. Its full-stack platform includes proprietary drones, radar units, and AI-enabled weather modelling software to generate validated rainfall and snowpack at scale.

Rainmaker operates in seven U.S. states and recently executed the country's first commercial drone cloud seeding operation in Utah. Using silver iodide particles and FAA-certified drones, it targets supercooled clouds and verifies impact with real-time attribution software. Paired with off-grid hardware, its solution offers water generation-as-a-service for drought-prone regions. Rainmaker raised a \$25 million Series A round led by Lowercarbon Capital to expand U.S. operations and further global deployment.



## **OVERVIEW**

**SECTOR:** Climate

**GEOGRAPHY:** USA



**Augustus Doricko**  
Founder & CEO

Augustus Doricko developed data-driven tools to optimise water well management before founding Rainmaker Technology Corporation. His work focuses on addressing water scarcity using drones and AI to generate atmospheric precipitation.

# Solugen

Founded in 2016, Solugen is a Houston-based biomanufacturing company producing essential chemicals from plant-based feedstocks using its proprietary Bioforge platform. The Bioforge integrates enzyme engineering and metal catalysis in a no-emission, waste-free process that replaces fossil-derived chemicals with cost-effective, sustainable alternatives.

Solugen currently operates a facility in Houston and is expanding with a second 500,000 sq ft Bioforge in Marshall, Minnesota, built in partnership with ADM and supported by a \$213.6M U.S. Department of Energy loan. The new site will produce up to 120,000 tonnes per year of water treatment, agriculture, and construction chemicals—replacing conventional petrochemicals with clean, U.S.-made products. With high product yields, low input costs, and localized sourcing, Solugen aims to scale sustainable chemical production while maintaining cost competitiveness and software-like margins.



## **OVERVIEW**

**SECTOR:** Chemicals

**GEOGRAPHY:** USA



**Gaurab Chakrabarti**  
Founder & CEO

Gaurab Chakrabarti is the co-founder and CEO of Solugen, with an MD and PhD in cancer biology and enzymology from the University of Texas. A Forbes 30 Under 30 honouree, he previously studied computational neuroscience at Brown and has authored over 20 scientific publications and patents.



Spot AI turns existing security cameras into intelligent systems that improve safety, efficiency, and operational oversight. Its core product, the Intelligent Video Recorder (IVR), connects to IP-based cameras and processes video locally at the edge—reducing bandwidth use and enabling real-time video analysis without requiring new hardware.

The platform allows users to define custom rules and triggers, such as alerting on unusual activity or initiating automated responses like equipment shutdowns. This modular approach supports gradual adoption, from simple monitoring to complex automation. Deployed across over 1,000 customers in sectors like manufacturing, retail, and education, Spot AI enables applications such as workplace hazard detection, retail operations optimisation, and enhanced school safety. By layering AI onto existing infrastructure, Spot AI offers a cost-effective path to smarter, more responsive physical environments.



## OVERVIEW

SECTOR: Security

GEOGRAPHY: USA



**Rish Gupta**  
Co-Founder & CEO

Rish Gupta is a co-founder of Spot AI and previously founded LetsIntern, a leading internships platform in India. A Stanford GSB and Delhi University graduate, he has built and scaled technology businesses across sectors and remains active in the startup ecosystem.

# superpower

Founded in 2023, Superpower is a preventive health platform offering personalised, data-driven care through advanced lab testing, AI-guided insights, and concierge support. Members receive biannual blood testing covering over 100 biomarkers, with results integrated alongside medical records, wearables, and genetics to deliver customised health protocols and biological age tracking.

The platform combines physician-designed action plans with 24/7 AI and human support, helping users detect risks early, optimise wellbeing, and navigate personalised treatments including hormone and peptide therapies. Superpower aims to democratise access to advanced healthcare—previously reserved for high-cost concierge clinics—by offering comprehensive diagnostics and continuous guidance at an accessible price point. Backed by \$30M in Series A funding, the company is building a unified, lifelong health partner and digital front door to proactive, next-generation care.



## OVERVIEW

SECTOR: Health

GEOGRAPHY: USA



**Max Marchione**  
Co-Founder & CEO

Max Marchione co-founded Superpower to make proactive, high-quality healthcare accessible at scale.

He previously founded Ultraviolet Ventures and Next Chapter, investing in early-stage startups across health and technology.



Founded in 2022, Zinite is a U.S.-based semiconductor startup developing a new kind of transistor that can be built directly on top of finished computer chips. Their thin-film transistor (TFT) works at low temperatures, making it possible to add extra layers of logic, memory, or sensors without changing the original chip design.

Zinite's technology allows chipmakers to stack computing layers vertically, increasing performance and reducing energy use by shortening the distance signals need to travel. Their transistors offer high speed and small size, while being compatible with standard chip factories and manufacturing tools.

The company's approach helps add more computing power without moving to smaller, more expensive chip designs. With strong applications in AI, high-performance computing, and next-generation electronics, Zinite is now working with early partners to bring its technology into commercial production and help drive the next wave of 3D chip innovation.



## **OVERVIEW**

**SECTOR:** Semiconductors

**GEOGRAPHY:** USA



**Gem Shoute**  
Founder & CEO

Gem Shoute holds a PhD in solid-state electronics and completed a postdoctoral fellowship at Berkeley Labs focused on next-generation semiconductor innovation.

## Sponsor



U.S.-Saudi Business Council  
مجلس الأعمال السعودي الأمريكي

For more than 30 years, since its founding by Saudi Royal Decree and the U.S. Executive Branch, the U.S.-Saudi Business Council has been the only organization singularly dedicated to advancing bilateral trade, investment, and commercial ties between the United States and Saudi Arabia. With our strategic presence in Washington D.C. and Riyadh, and through our networks, members, and stakeholders, we have facilitated billions in cross-border trade and investment, fostered lasting business partnerships, and driven economic collaboration at every level between our two nations. Over the past ten years alone, we have assisted over 1,000 companies and organizations with their business objectives, organized hundreds of business events, including high-level trade missions, investment forums, conferences, and roundtables, and hosted top leaders from both countries, including His Majesty King Salman and His Royal Highness Crown Prince Mohammed bin Salman. We have supported major U.S. companies like Honeywell, ExxonMobil, and Northrop Grumman, as well as innovative SMEs, and Saudi conglomerates like Al Zamil, NEOM, and SABIC, along with government entities and NGOs from both countries. As Saudi Arabia accelerates its Vision 2030 transformation and the U.S. strengthens its alliances with the Kingdom, the Council remains at the heart of this relationship, connecting companies, creating opportunities, and supporting industries shaping the future. We are the premier facilitator of business engagement, providing direct access to key partners and regulators, eliminating barriers, streamlining market entry, and catalyzing commercial success through tailored matchmaking, strategic advisory, and high-level engagement.



Ana Carmen Neboisa has been facilitating partnerships across sectors the U.S.-Saudi Business Council and coordinating business development missions to/from Saudi Arabia for over 20 years. Sectors of focus include aerospace, automotive, culture, education, entrepreneurship, infrastructure, healthcare, mining, tech, sports, transportation, utilities and venture capital.

Prior to joining the Council, Ms. Neboisa held several positions related to the Middle East and Africa in academic and non-profit institutions. She worked in business development and logistics for multinational companies based in the U.S., Italy, and the UK.

Ana earned a Master of Arts Degree in International Peace and Conflict Resolution from the American University in Washington, D.C., as well as a Masters in International Relations from the National School of Political Science and Public Administration in Bucharest, Romania. Ms. Neboisa also holds a Bachelor of Arts Degree in International Transactions from the Academy of Economics Studies in Bucharest, Romania. In addition, she completed the Developing Leaders Program for Nonprofit Professionals at Columbia University in New York.

## Co-Sponsor





**SILICON VALLEY-SAUDI  
DEEPTech SHOWCASE**

*RIYADH, SAUDI ARABIA | MAY 2025*

Radiate Ventures  
1 Ferry Building,  
San Francisco

Riyadh, New York,  
Singapore, Miami, London,  
Dubai

